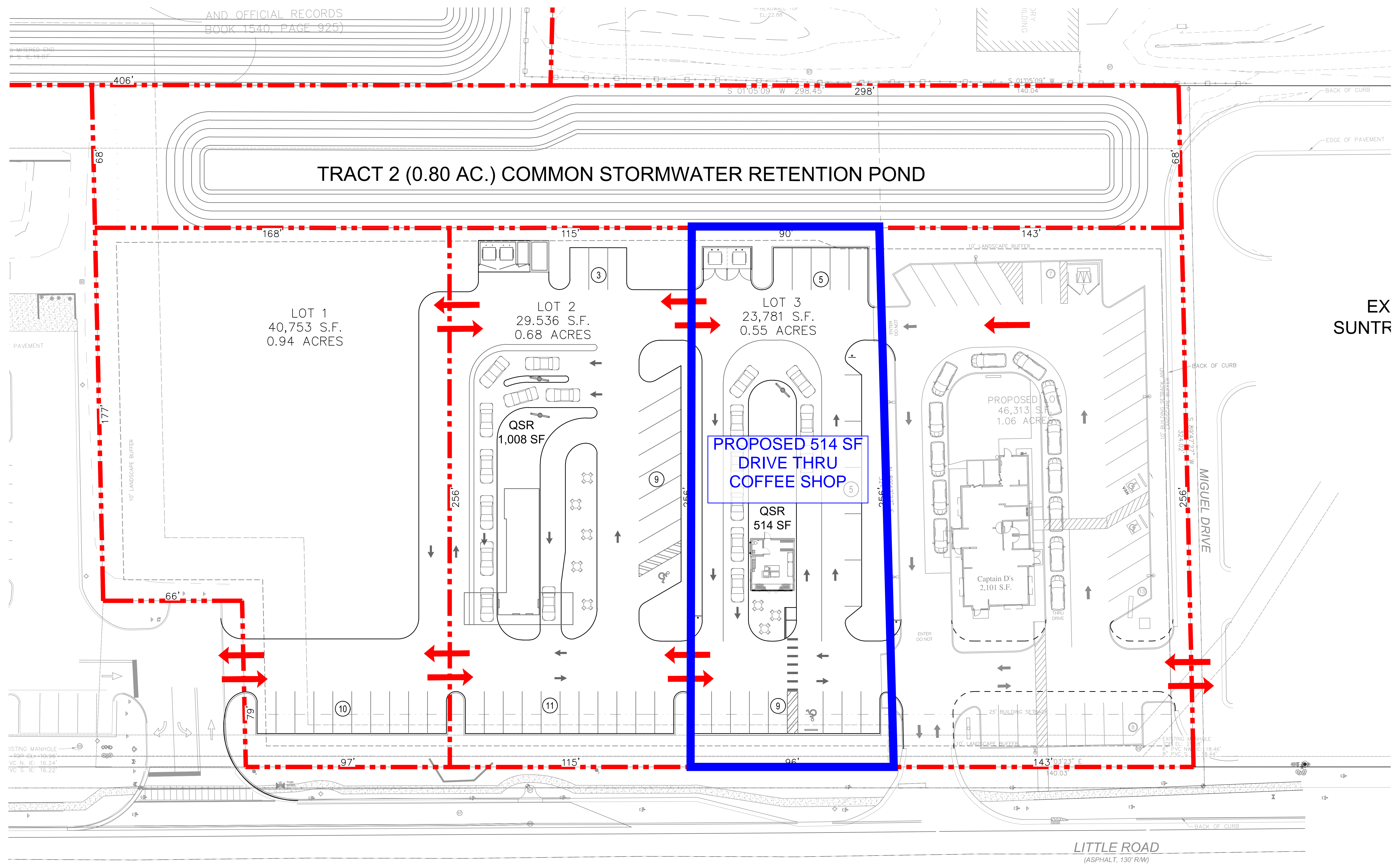


AND OFFICIAL RECORDS  
BOOK 1540, PAGE 925



K:\ORL\_Civil\049258019-Pelloni Pasco Retail\CADD\CONCEPT\SP-29.dwg

EXISTING MANHOLE  
1+23.23=23.96'  
VC N. IE: 16.24'  
VC S. IE: 16.22'

EXISTING MANHOLE  
TOT. EL: 2.89'  
6" PVC RISE: 18.46'  
9" PVC S: 18.44'

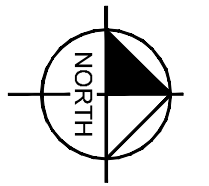
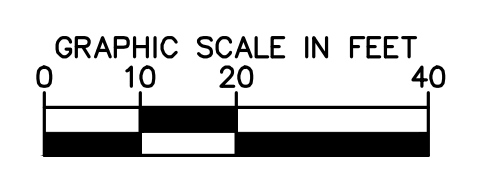
# PELLONI PASCO RETAIL

# PROPOSED LOT PLAN

PASCO COUNTY, FLORIDA

07/22/2021 - CONTACT JONATHAN A. MARTIN, P.E. (407) 427-1686

PREPARED FOR PELLONI DEVELOPMENT GROUP



SP-29

Kimley»Horn