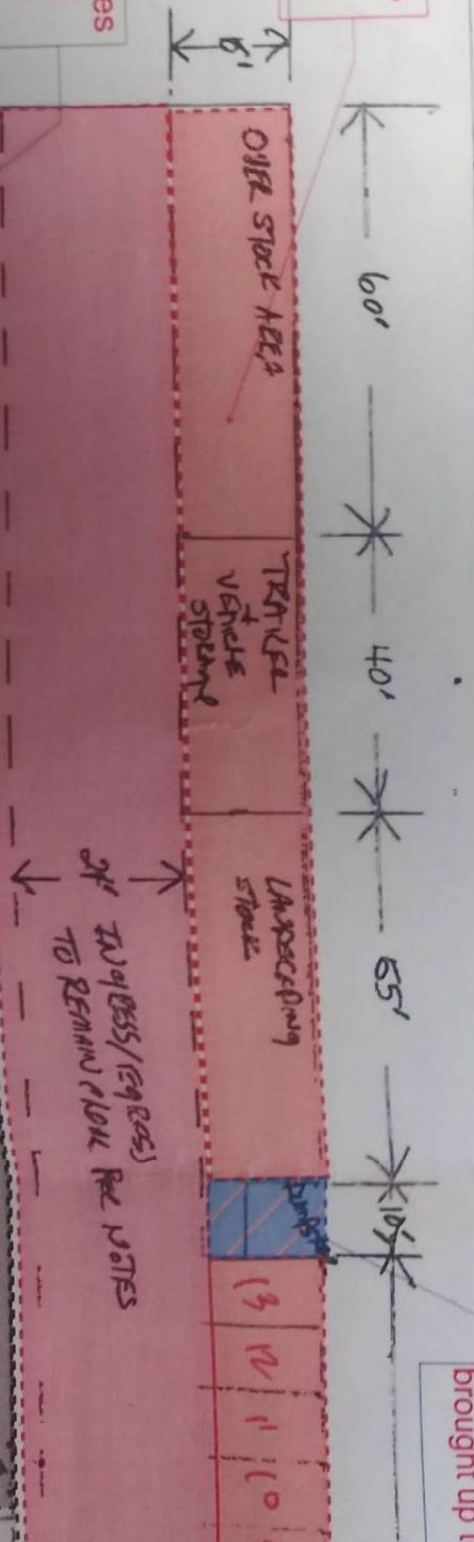


NOTES

- 1) POWER SHUT OFF SOUTH SIDE OF BUILDING
- 2) 1 HANDICAP PARKING SPACE 8'X18'
- 3) 1 HANDICAP ACCESS 5'X18'
- 4) 12 PARKING SPACES 10'X18'
- 5) ALL SIDEWALKS CLEAR OF PLANTS AT ALL TIMES
- 6) STORAGE VEHICLES + TRAILERS STORAGE NORTH WEST SECTION OF PROPERTY
- 7) 120 STORAGE ALONG SOUTH SIDE OF BUILDING INCLUDING RUBBER BALLETS
- 8) MAINTAIN 24" FOOT WALKWAY / ACCESS AS SHOWN
- 9) MAINTAIN OVERHANGING GRADIENTS, TRUCKS, OR TRAILERS:
- 10) MAINTAIN CLEARANCE / ACCESS TO FIRE CONNECTION MUST MAINTAIN SUCH AS THE RISER, LOCATED ON THE NORTH SIDE OF TRAILERS LOCATED ON FOOT OF

15' x 155' area used for overstock, trailer & vehicle storage and landscape storage

Section 8.07.05 - Maintenance - states that landscaping shall be maintained and kept free from refuse and debris



Dumpster 10x... Area must be brought up to