

**SQUARE FOOTAGE**

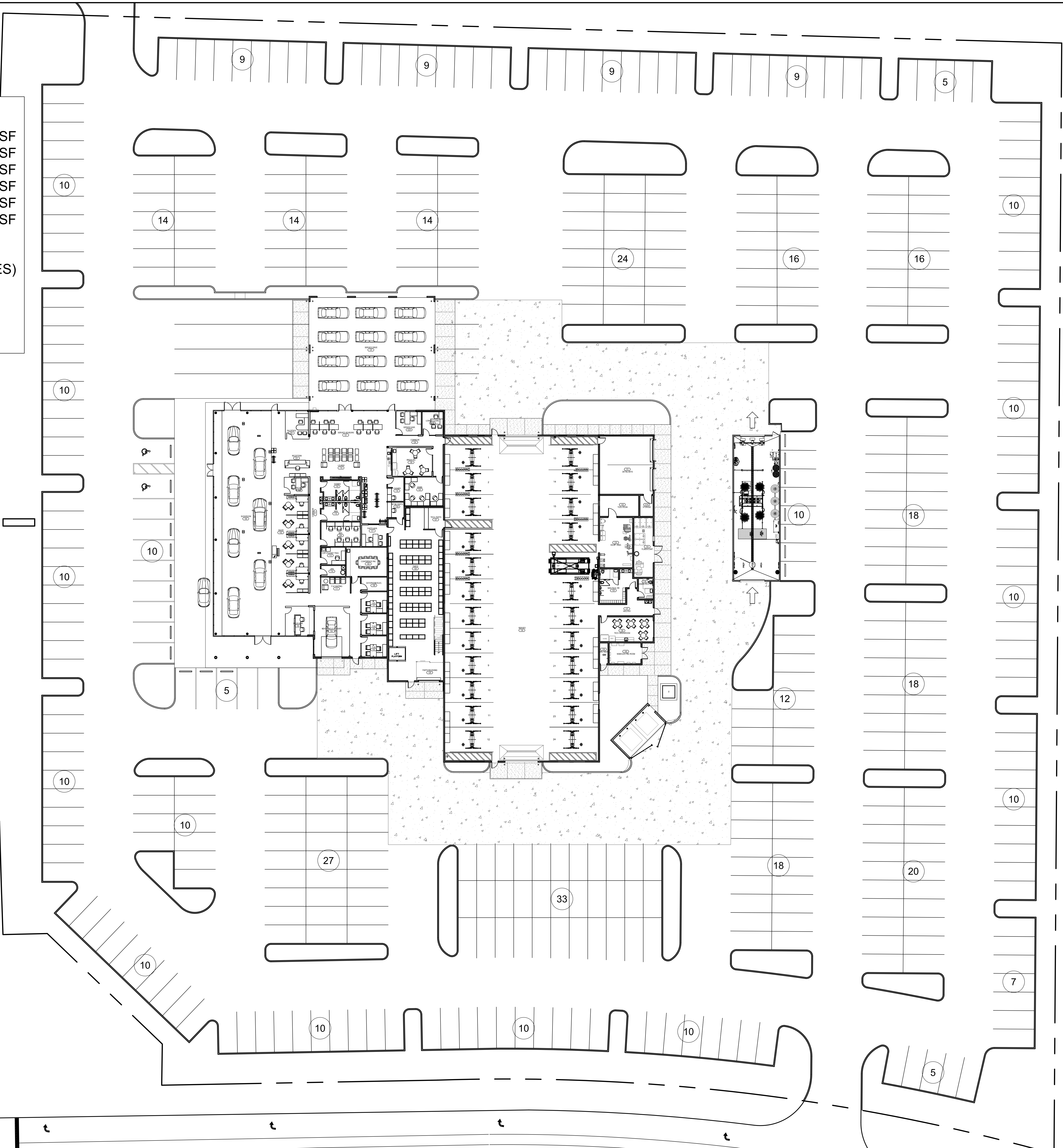
|                             |           |
|-----------------------------|-----------|
| SHOWROOM                    | 10,956 SF |
| COVERED SERVICE DRIVE       | 3,280 SF  |
| SERVICE DEPARTMENT          | 15,015 SF |
| PARTS DEPARTMENT (1ST FLR.) | 2,204 SF  |
| PARTS DEPARTMENT (2ND FLR.) | 2,204 SF  |
| CARWASH                     | 1,665 SF  |

SITE 262,720 SF (6.03 ACRES)

**PARKING COUNT**

450 TOTAL SPACES

S.R. 56

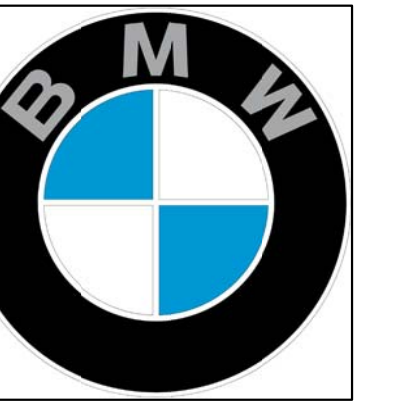


MANSFIELD BLVD.

**HARTMANN**  
architecture inc.

5706 S. MacDill Ave./ Suite A  
Tampa, Florida 33611  
813.251.2190  
A A 2 6 0 0 6 6 2

Project Name



**BMW at Wesley Chapel**  
S.R. 56 at Mansfield Blvd.  
Wesley Chapel, Florida 33543

Sheet Title

Revisions

- ▲
- ▲
- ▲

State Registration

Richard Hartmann AIA, LEED AP  
AR 0009622



To the best of the knowledge of the architect & engineers, said plans and specifications comply with the applicable building codes and minimum fire safety standards.

Project Number

19018

Drawn By

RCK

Checked By

RJH

Scale

AS NOTED

Issue Date

XX.XX.19

Sheet Number

