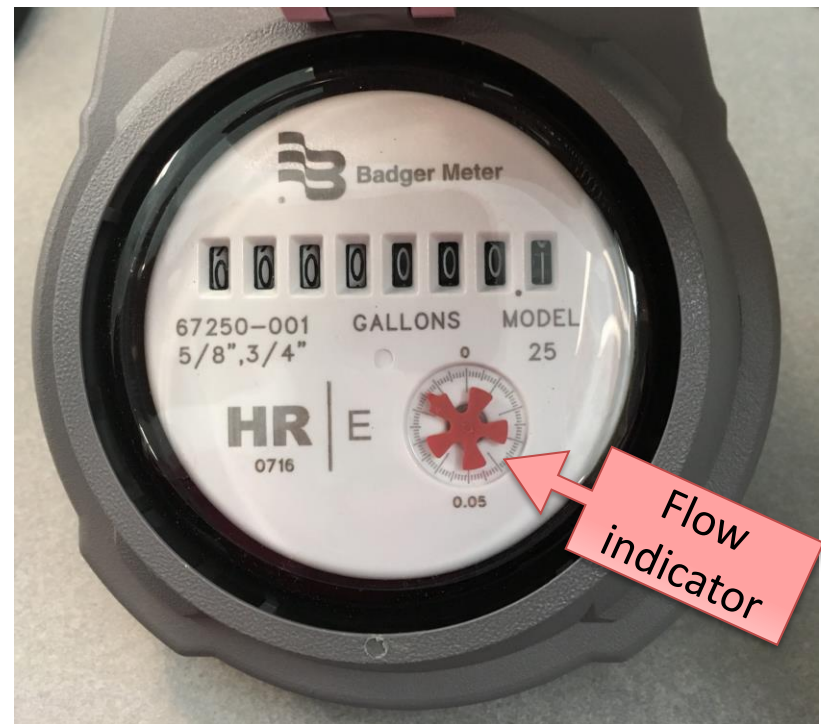


(Left) This style of meter has a long **red needle** to count single gallons, while the "stationary zero" serves as a placeholder. A full sweep by the needle around the face of the meter = 10 gallons.

For these meters, **you must include the needle's position in place of the stationary zero when taking your reading.** For example, the current reading shown on the **left** meter = 239,537 gallons.



(Right) The new style of meter shown in the photo on the right **does not have the red needle** to count single gallons. Instead, the "odometer" reading extends to a decimal place. Therefore, the meter on the right is showing 0.1 gallon of usage.