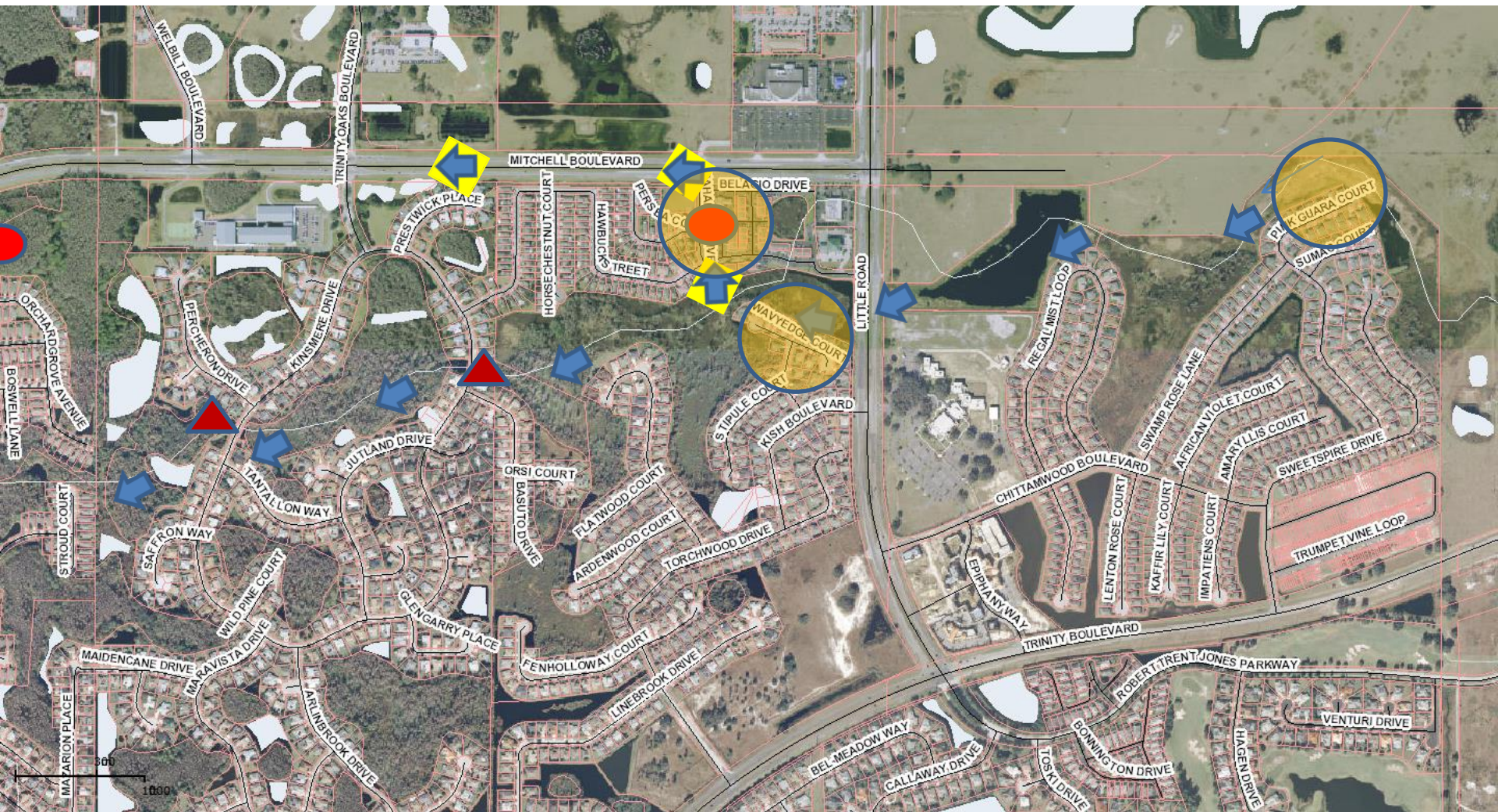


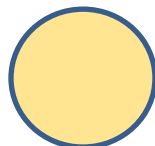




The Duck Slough BMPs are working well. The wetland between Little Road and Kinsmere BMP 6 is holding water. We are pumping from the vicinity of Mahaleb Dr. and Persea to “drain the wetland”. This operation is intended to help Wavy Edge Ct.



- 
 Normal
water
flow
- 
 Pump
Location
- 
 Known
Flood
Area
- 
 Diverted
Water Path
- 
 BMP
Locations