



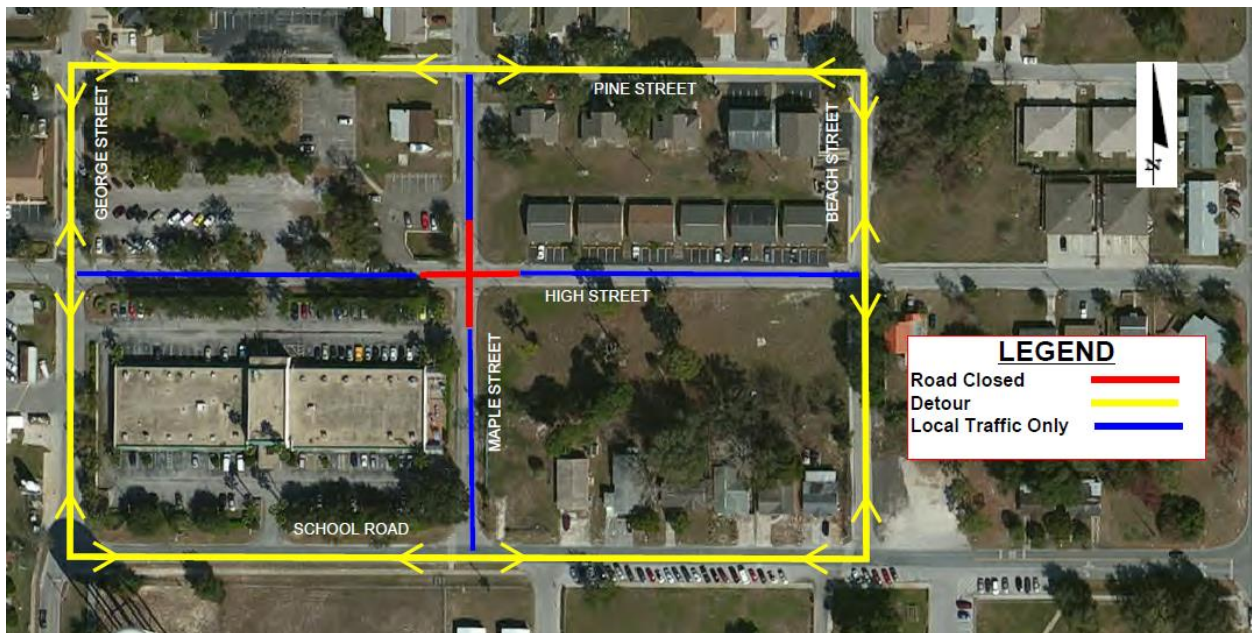
# NEWS RELEASE

Contact: Public Works Department  
Phone: 727- 841-4536

Date: November 21, 2017

## City of New Port Richey's 2015-Stormwater System Improvements Project High & Maple Road Closure

**New Port Richey, Florida** – The City's Public Works Department will begin work on the intersection of High Street and Maple Street, in the Schwettman Oaks Subdivision on Monday, November 27, 2017. As a result of the construction, High Street, between George Street and Beach Street, and Maple Street, between Pine Street and School Road, will be closed to vehicular traffic from November 27, 2017 through December 15, 2017. Residents of the affected area will have full access to their homes. Please expect delays. We apologize for any inconveniences this may cause. Please refer to the map for individual impacts. For more information on this project or the road closure, please contact Martin Field, Construction Project Manager at (727) 841-4543 Office or (727) 359-9319 Cell.



###

# NEW PORT RICHEY