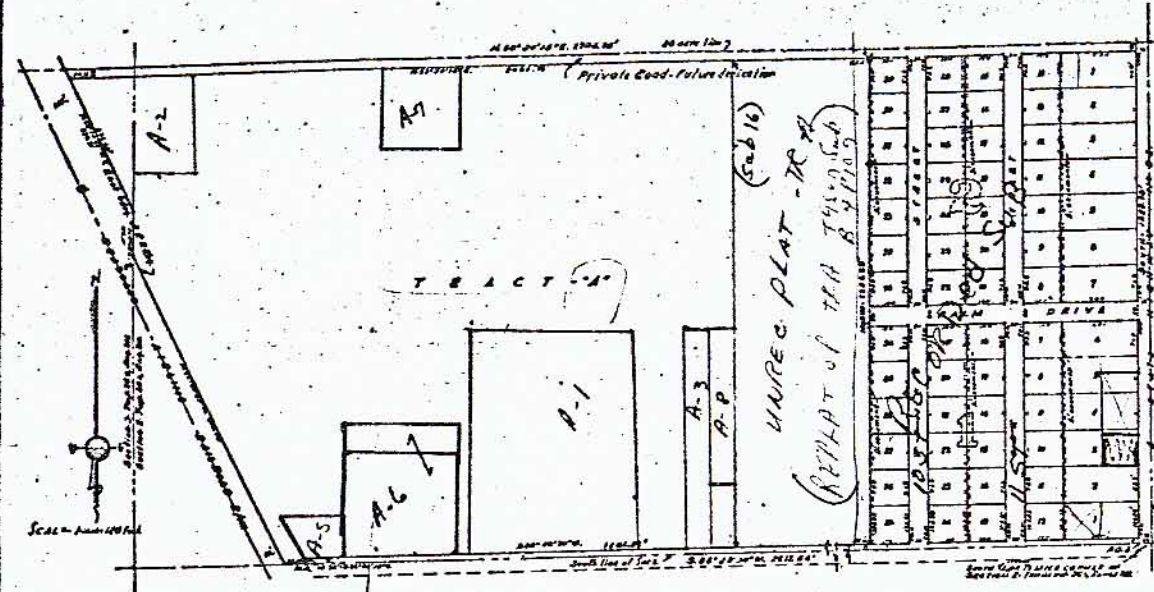


TYSON SUBDIVISION

BOOK 4 PAGE 109

BEING A SUBDIVISION OF ALL THAT PART OF THE SOUTH 1/2 OF THE SOUTHWEST 1/4 OF SECTION 3, TOWNSHIP 26S, RANGE 1E, AND ALL THAT PART OF THE SOUTH 1/2 OF THE SOUTHEAST 1/4 OF SECTION 3 - TOWNSHIP 26S, RANGE 21E, PASCO COUNTY, FLORIDA, ALL LYING EAST OF THE SEABOARD AIR LINE RAILROAD RIGHT-OF-WAY, LESS THE EAST-33 FT. FOR ROAD PURPOSES.



THE ABOVE DESCRIBED PLAT, FROM THE SOUTH 1/2 OF THE SOUTHWEST 1/4 OF SECTION 3, TOWNSHIP 26S, RANGE 1E, PASCO COUNTY, FLORIDA, AND ALSO FROM THE SOUTH 1/2 OF THE SOUTHEAST 1/4 OF SECTION 3, TOWNSHIP 26S, RANGE 21E, PASCO COUNTY, FLORIDA, WAS LAYED OUT AND PLATTED BY THE ABOVE NAMED PARTY, AND IS HEREBY CERTIFIED TO BE TRUE AND CORRECT.

SIGNED, SEALED AND DELIVERED in the presence of _____ Witnesses: _____

My commission expires _____

APPROVED by the Board of County Commissioners of Pasco County, Florida, this _____ day of _____, 1953.

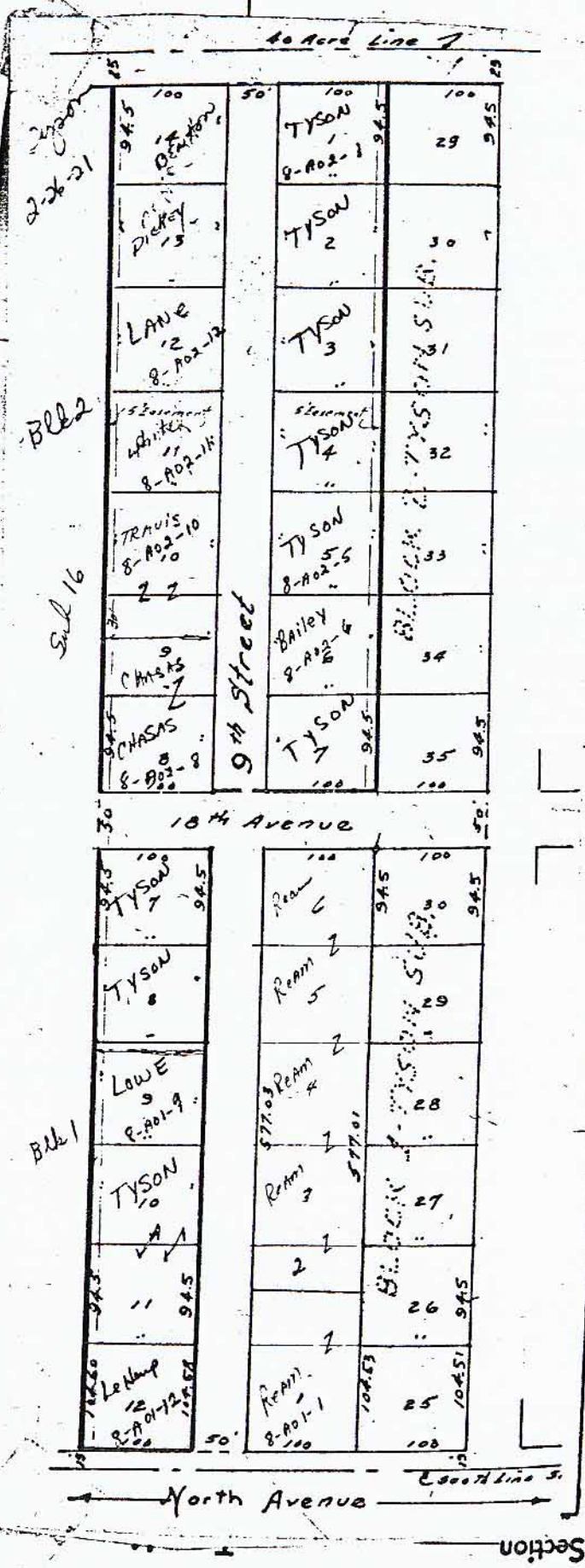
FILED in the Public Records of Pasco County, Florida, this _____ day of _____, 1953, in PLAT BOOK 4 PAGE 109.

Notary Public

Range 1E

553

PASCO COUNTY, FLORIDA



Section 3