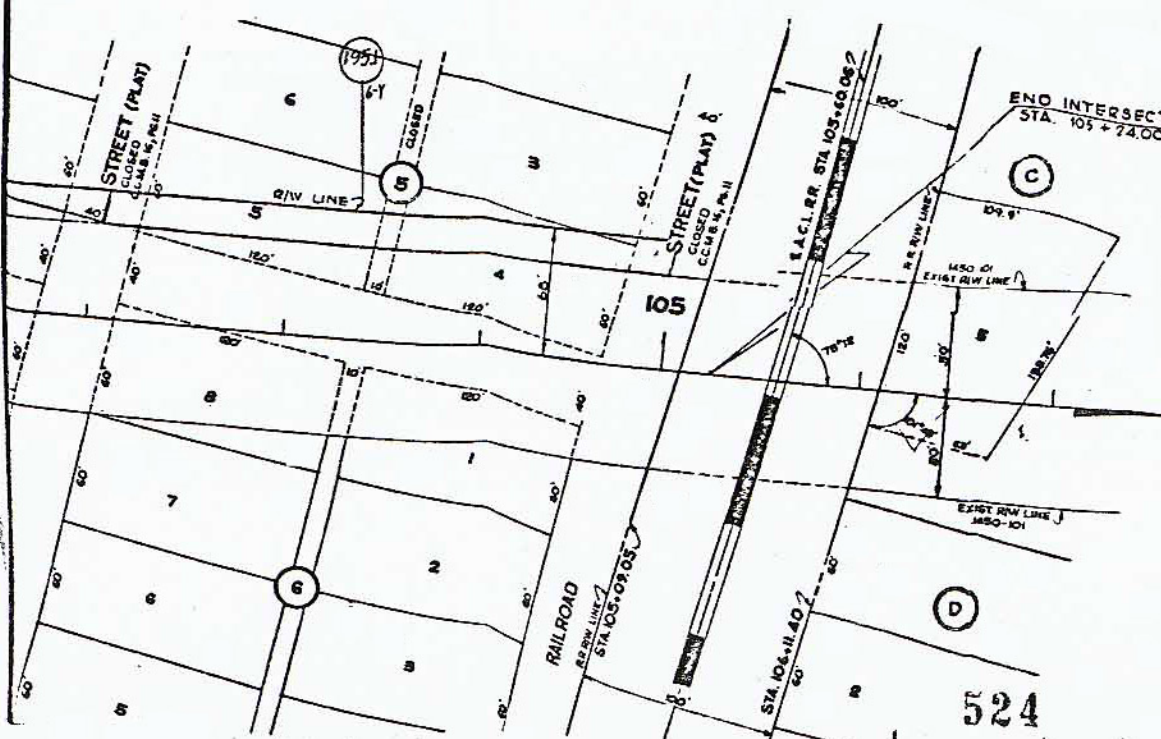


R21E

1250



524

①
CURVE DATA
P.L. STA. 947.81
Δ = 92° 46' 34" E
D = 1700'
L = 876.47'
R = 5729.56'
P.C. STA. 90+32.52
P.T. STA. 99+08.99

INTERSECTION R/W

STATE OF FLORIDA STATE ROAD DEPARTMENT			
RIGHT OF WAY MAP			
STATE ROAD NO. 700, 35		PASCO COUNTY	
DRAWN	BY	DATE	APPROVED BY
TRACED	LR.J.	9-2-65	<i>H. M. Johnson</i>
CHECKED	DC.	11-1-65	<i>[Signature]</i>
COMPARED	D.C.	1-19-66	
INDEXED			