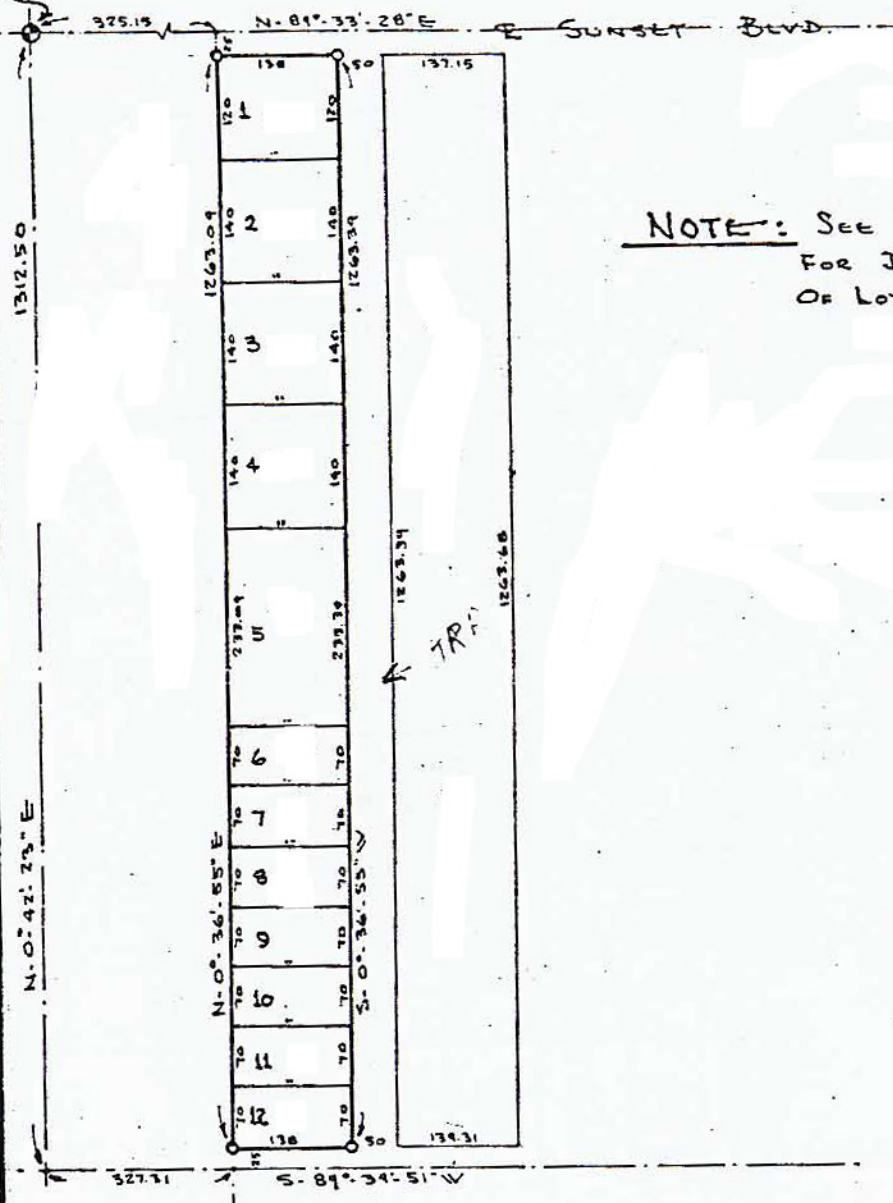


Springfield, Fla. (1)

SEC. 25, TWP. 24 S., RING. 16 E.

N.W. Corner
Sec. 25. 24. 16



NOTE: SEE SHEET 2
FOR DESCRIPTIONS
OF LOTS 1 THRU 12



Scale: 1" = 200.0'

For: Urban Abair

Order No. 165-ZH
March 19, 1971-stk

C. Fred Deuel and Associates, Inc.
St. Petersburg - Zephyrhills
Certified as to Survey.

C. Fred Deuel

Florida Surveyor's Reg'n. N3 827
Florida Engineer's Reg'n. N35093

Dwn. by G.F.D.
Ckd. by S.A.H.