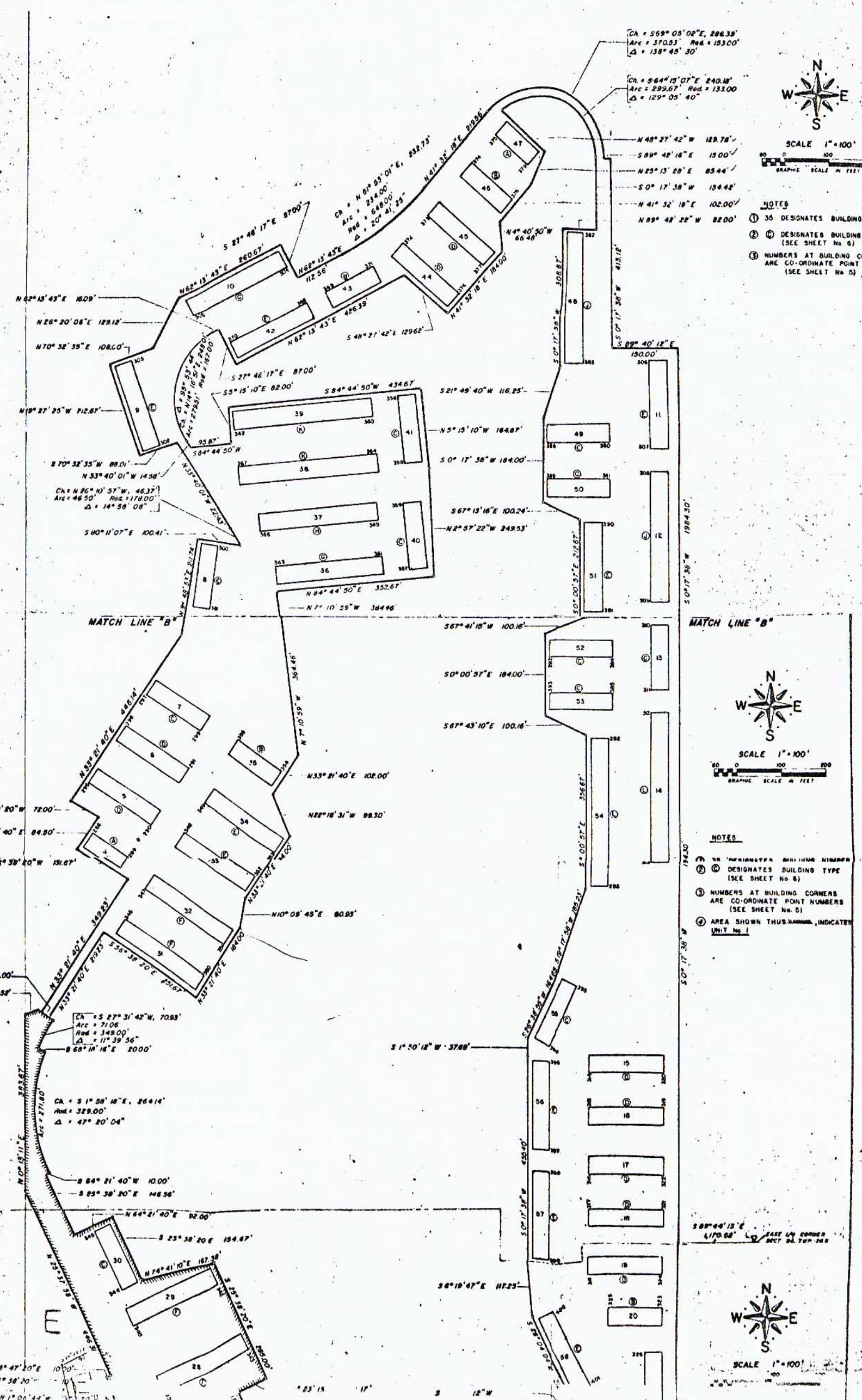


SEVEN SPRINGS VILLAS, D

A CONDOMINIUM

BEING A PORTION OF SECTION 24, TOWNSHIP 26 SOUTH, RANGE 16 EAST
PASCO COUNTY, FLORIDA

506



CA = 569° 05' 02" E, 286.39'
Arc = 370.53' Rad = 153.00'
Δ = 138° 45' 30"

CA = 564° 15' 07" E, 240.18'
Arc = 299.67' Rad = 133.00'
Δ = 129° 05' 40"



SCALE 1" = 100'
GRAPHIC SCALE IN FEET

- NOTES
- ① 36 DESIGNATES BUILDING NUMBER
 - ② ③ DESIGNATES BUILDING TYPE (SEE SHEET No. 6)
 - ④ NUMBERS AT BUILDING CORNERS ARE CO-ORDINATE POINT NUMBERS (SEE SHEET No. 5)



SCALE 1" = 100'
GRAPHIC SCALE IN FEET

- NOTES
- ① 36 DESIGNATES BUILDING NUMBER
 - ② ③ DESIGNATES BUILDING TYPE (SEE SHEET No. 6)
 - ④ NUMBERS AT BUILDING CORNERS ARE CO-ORDINATE POINT NUMBERS (SEE SHEET No. 5)
 - ⑤ AREA SHOWN THUS INDICATED UNIT No. 1



SCALE 1" = 100'
GRAPHIC SCALE IN FEET

N 38° 47' 20" E 10.50'
CA = N 1° 00' 42" W 37.70'
Arc = 37.70' Rad = 15.30'
Δ = 179° 59' 58"

N 23° 15' 17" E 12.00'

S 89° 44' 13" E 470.66'
Arc = 470.66' Rad = 196.22'
Δ = 90° 00' 00"