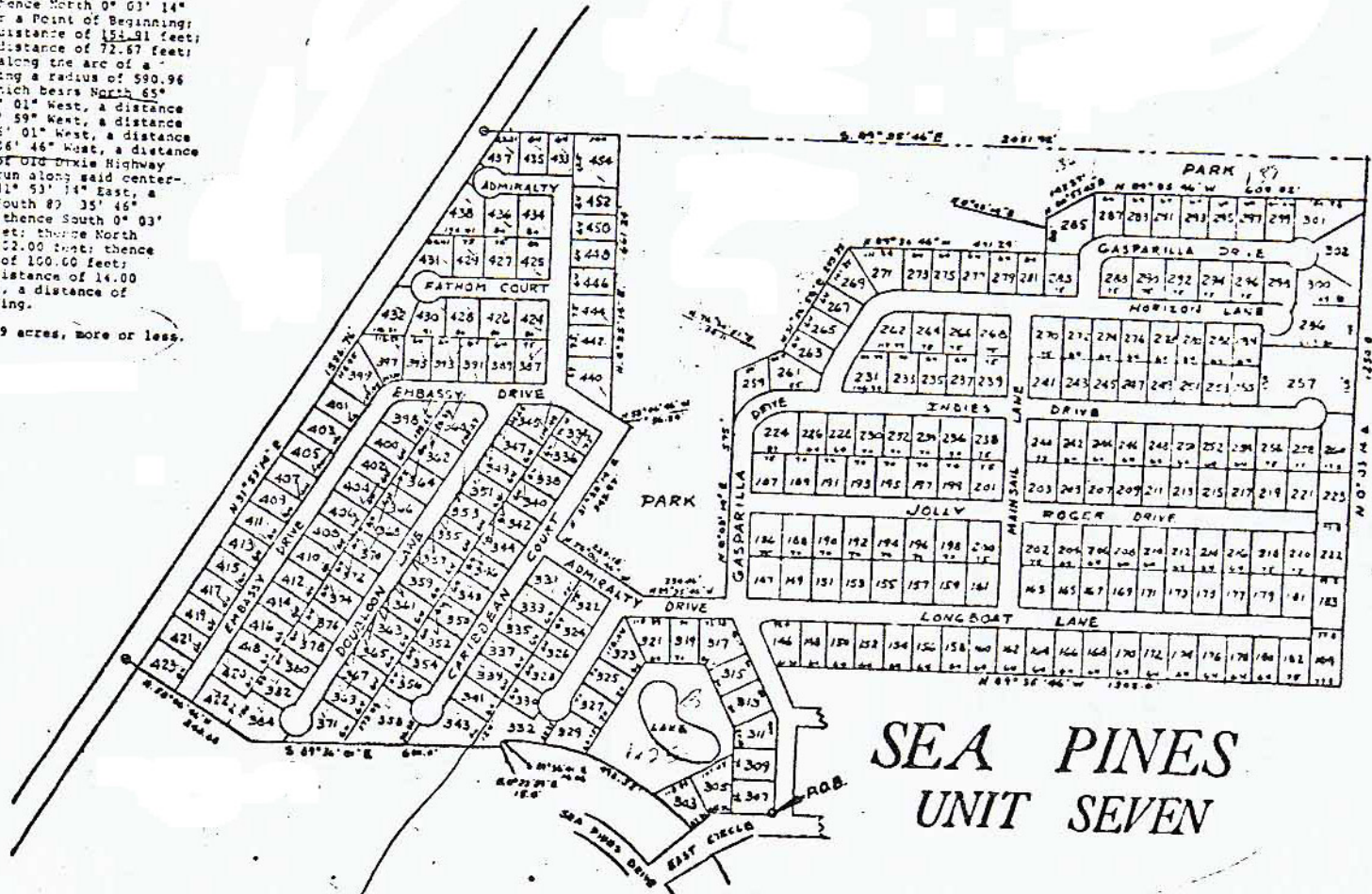


**SEA PINES UNIT SEVEN**

A portion of Section 14, Township 24 South, Range 16 East, Pasco County, Florida, being further described as follows:

Commence at the Southeast corner of the Southwest 1/4 of said Section 14; thence run along the East line of the West 1/2 of said Section 14, North 0° 03' 02" West, a distance of 1417.42 feet; thence South 89° 35' 46" East, a distance of 74.67 feet; thence North 0° 03' 14" East, a distance of 25.05 feet for a Point of Beginning; thence North 89° 35' 46" West, a distance of 151.31 feet; thence South 51° 32' 37" West, a distance of 72.67 feet; thence a distance of 492.55 feet along the arc of a curve to the left, said curve having a radius of 590.96 feet and a chord of 411.72 feet which bears North 65° 41' 31" West; thence North 89° 35' 01" West, a distance of 14.00 feet; thence South 0° 23' 59" West, a distance of 14.00 feet; thence North 89° 36' 01" West, a distance of 400.00 feet; thence North 58° 56' 46" West, a distance of 448.68 feet to the centerline of Old Dixie Highway as it is now established; thence run along said centerline of Old Dixie Highway, North 11° 53' 14" East, a distance of 1508.50 feet; thence South 89° 35' 46" East, a distance of 2051.9 feet; thence South 0° 03' 14" West, a distance of 1250.00 feet; thence North 89° 35' 46" West, a distance of 1302.00 feet; thence South 0° 03' 14" West, a distance of 100.00 feet; thence South 89° 35' 46" East, a distance of 14.00 feet; thence South 0° 03' 14" West, a distance of 250.00 feet to the Point of Beginning.

The above described parcel contains 78.19 acres, more or less.



**SEA PINES  
UNIT SEVEN**

"Exhibit A"

Page 5 of 5 pages

618 507