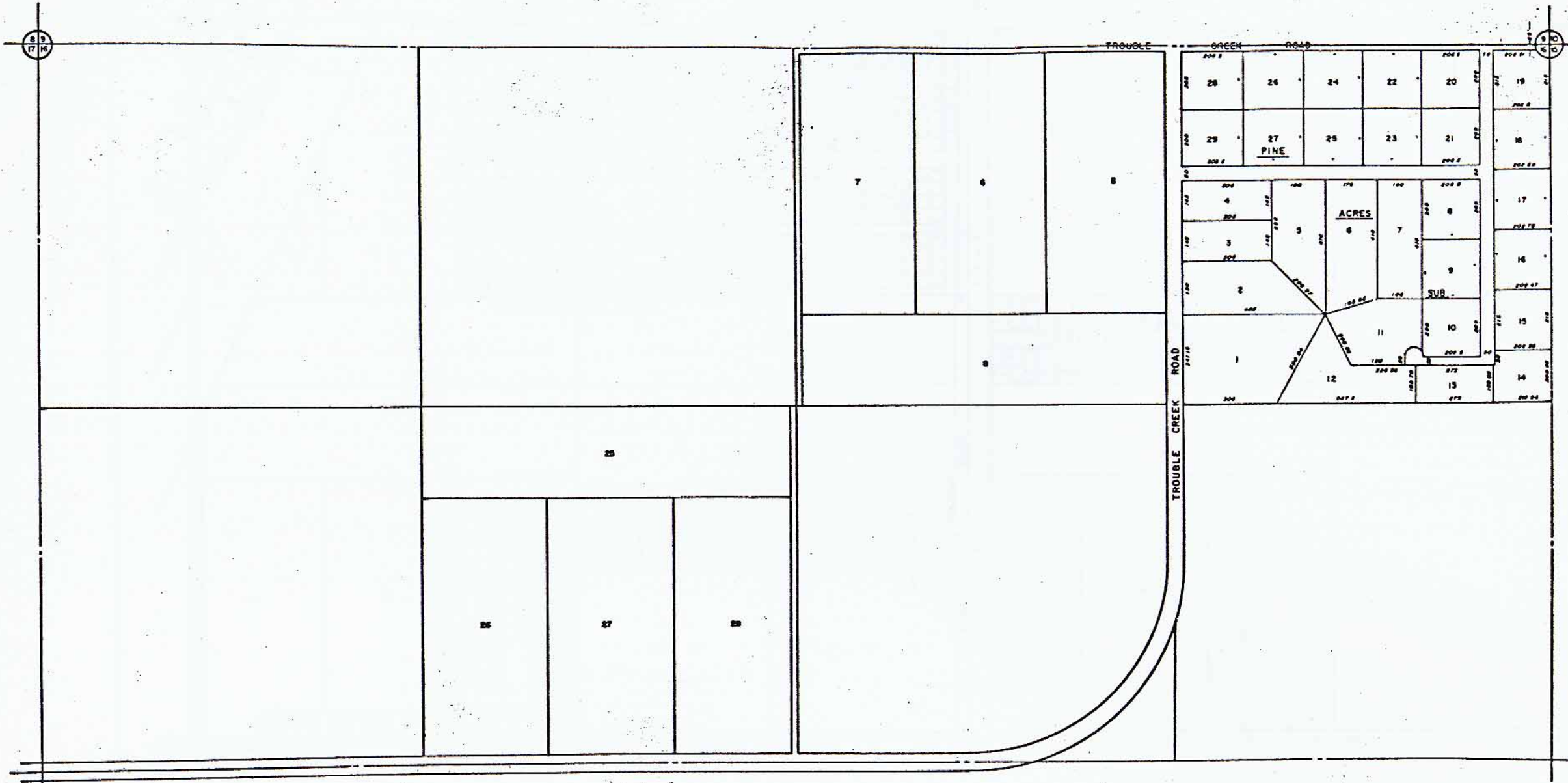


SEE SHEET NO. 75



SECTION N/2-16
 TOWNSHIP 26S
 RANGE 16E

CITY OF NEW PORT RICHEY, FLORIDA
 COMPILED AND DRAWN BY
 HUNNICUTT & ASSOCIATES, INC.
 ST PETERSBURG, FLORIDA
 DECEMBER, 1963

SHEET
 NUMBER
16/N