

33-24-18

*Sales Plat 43-13-79*

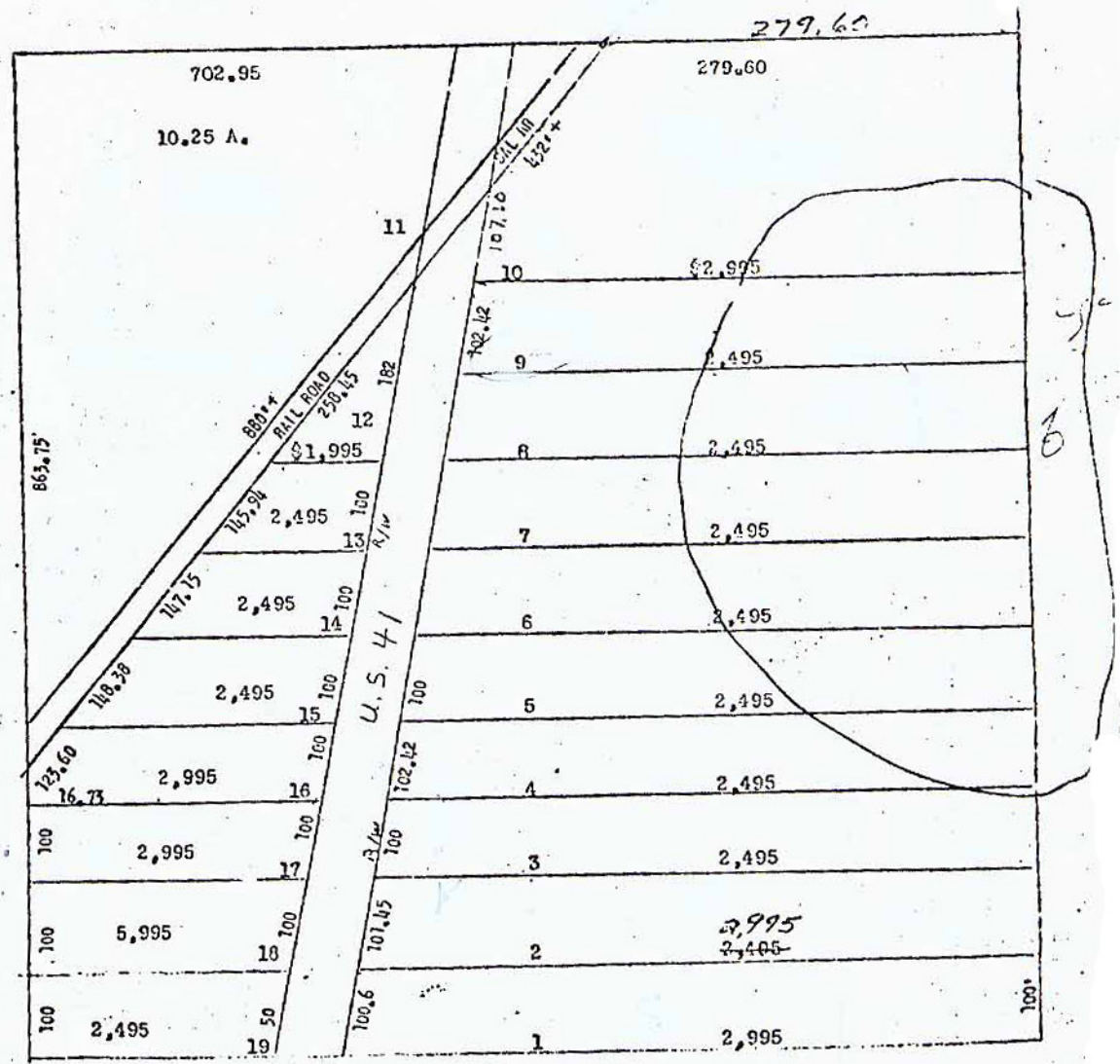
Choice Hi-way lots  
 Located on US 41 at GREENFIELD  
 29 miles North of Tampa  
 8 miles South of New Haven Clock  
 Co. proposed Industrial Park Site.

JOL SMITH REAL ESTATE  
 US 41 South, Ph. 2055  
 P. O. Box 331  
 Brooksville, Florida

Choice property for commercial  
 Excellent sites for Hotel, Gas  
 Station, Garage, Fruit Stand,  
 Novelty Business, Grocery Store, etc.

ONLY 10% Down  
 BAL \$20 per month

Located on curve and  
 railway crossing which  
 gives slower hi-way  
 traffic.



308