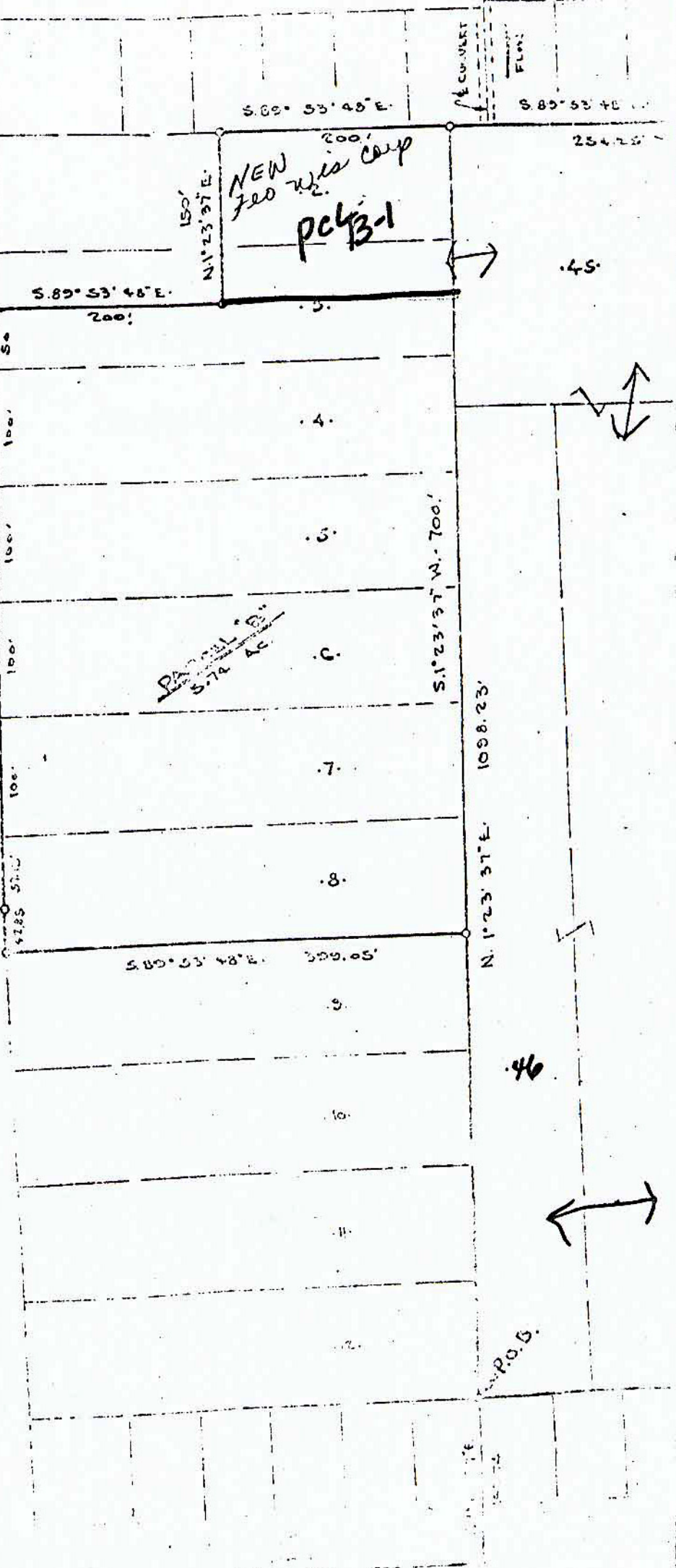


U.S. HIGHWAY (N) 10

N. 1° 23' 37" E. 507.15'



S. 89° 53' 48" E.

S. 89° 53' 48" E.

N. 1° 23' 37" E.

S. 89° 53' 48" E.

200'

.45

54

100'

100'

100'

100'

100'

1785 57.0

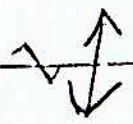
S. 1° 23' 37" W. 700'

N. 1° 23' 37" E. 1008.23'

S. 89° 53' 48" E. 300.05'

46

P.O.D.



CONVERT

FLAT

254.25'

NEW 720' x 200' camp  
pct B-1

RACONELL B.  
5.74 AC.

.4

.5

.6

.7

.8

.9

10

11

12